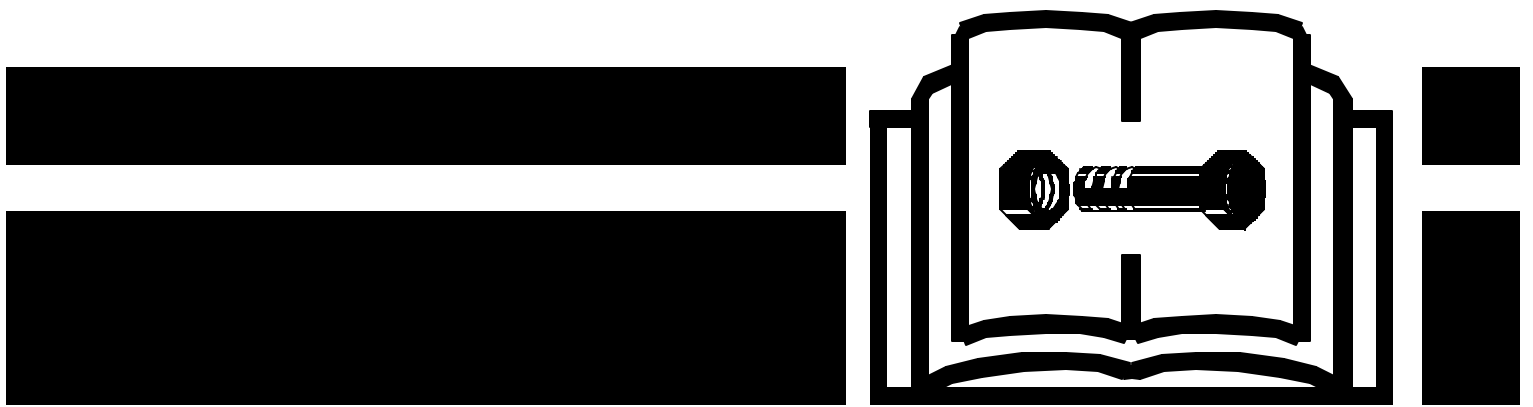


Vermeer®



Parts Manual

M5030_M6030_M7030_M8030_P1.06
SERIAL NO. 101 -
ORDER NO. 105400R35

HOW TO USE THE MANUAL

This manual contains illustrations and parts lists of components and assemblies which make up the machine. Each page consists of the name of the assembly or component, a figure number, reference numbers, part numbers, part names, and the quantities of the parts used.

Assembly or component name helps identify the illustration and parts list for each figure. This name also helps locate the general area of the machine where the assembly or component can be located.

Figure numbers are used to identify each assembly or component and to group these assemblies or components into major categories.

Reference numbers shown in a column refers to the numbered parts in the illustration. This

ties the part in the illustration to the part number and description in the parts list. Part numbers are used to identify individual parts or part assemblies.

Part descriptions provide the name of the part, plus additional information such as dimensional specifications and what parts are grouped together to form part assemblies, which helps you identify the part(s).

Quantities listed for each figure are only for that assembly or component and not the total used per machine.

Parts are listed by part number in numerical order in the back portion of the manual. After each part number is a list of references where the part is

ORDERING PARTS

Parts for repair or replacement are available through our network of authorized dealers located throughout the world.

Use only authorized Vermeer parts for repair or replacement. Always give the serial number and

model number of the machine for which parts are being ordered. When ordering parts for component(s), which are not manufactured by Vermeer Manufacturing, also give the serial number of that component(s). Order all parts by part number, part name, and quantity needed.

UPDATING AND REORDERING MANUALS

The parts lists, illustrations, and specifications in this manual are based on the latest information available at time of publication. Your machine may have product improvements and options not yet contained in this manual.

Vermeer Manufacturing Company reserves the right to make changes at any time without notice or obligation to you.

Your dealer will receive notice of these changes and can assist you with accurate parts identification when ordering.

A copy of this manual is supplied with each machine. Additional copies are available through your dealer. When ordering additional manuals, use the reorder number listed on the front cover and the quantity needed.

No part of this manual may be reproduced in any form or by any means, electronic or mechanical, including photocopying, recording, or by any information storage and retrieval systems, without the express written consent of Vermeer Manufacturing Company.

Copyright © 2002 Vermeer Mfg. Co.
All rights reserved.
Vermeer Manufacturing Company
1210 Vermeer Road East, P.O. Box 200
Pella, Iowa 50219-0200, USA

PARTS LIST TABLE OF CONTENTS

SECTION 1 - DECAL ASSEMBLIES

DECAL ASSEMBLY (FIG. 1-1)	PAGE 1-1
---------------------------------	----------

SECTION 2 - FRAME ASSEMBLIES

END SUPPORT ASSEMBLY (FIG. 2-5)	PAGE 2-9, 2-10
FRONT FRAME ASSEMBLY (CONT.) (FIG. 2-2)	PAGE 2-3, 2-4
FRONT FRAME ASSEMBLY (FIG. 2-1)	PAGE 2-1, 2-2
SHOE/SKID ASSEMBLY (FIG. 2-4)	PAGE 2-7
TOP COVER ASSEMBLY (FIG. 2-3)	PAGE 2-5, 2-6
CROP DIVIDER (FIG. 2-6).....	PAGE 2-11, 2-12

SECTION 3 - DRIVE ASSEMBLIES

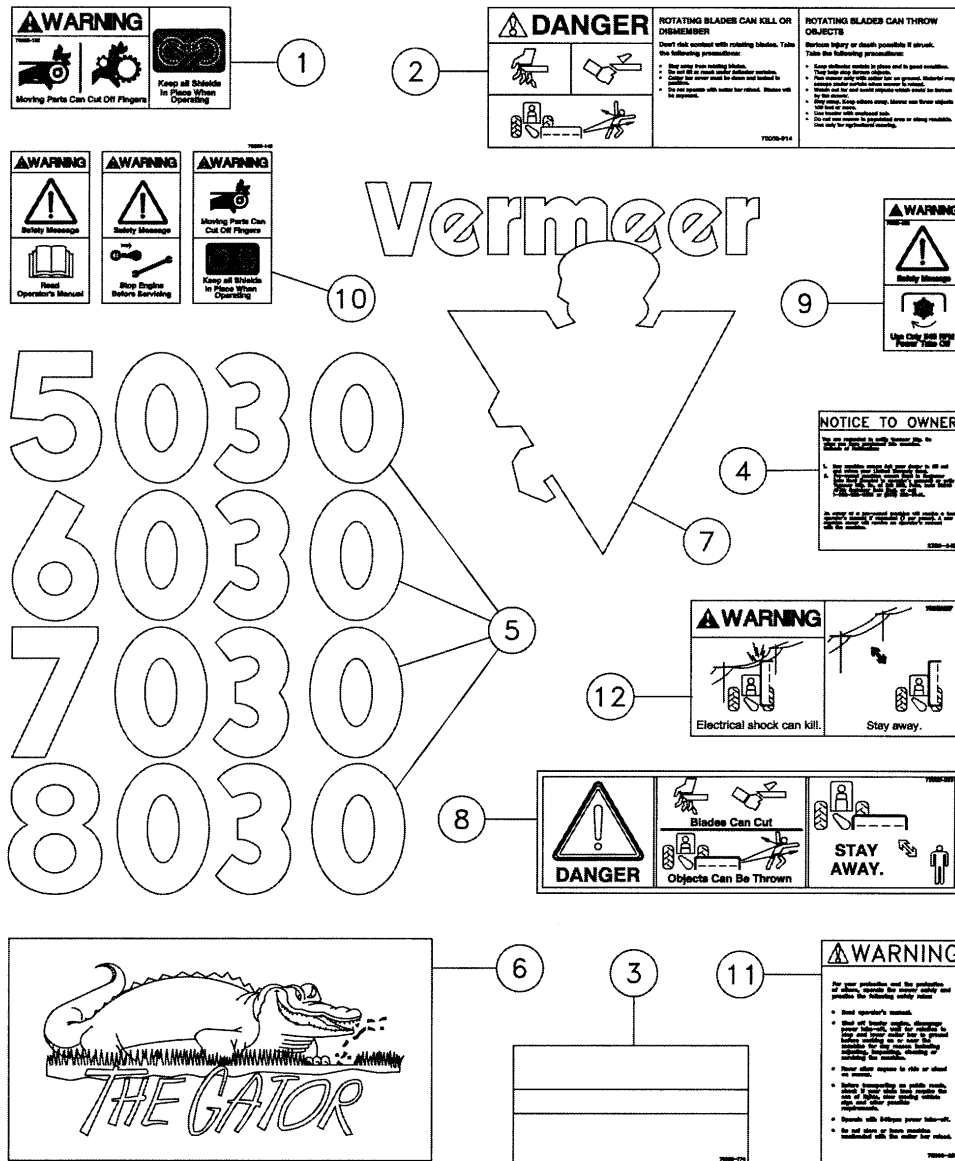
BELT DRIVE ASSEMBLY (FIG. 3-1)	PAGE 3-1, 3-2
CUTTER BAR ASSEMBLY (FIG. 3-2)	PAGE 3-3, 3-4
CUTTER UNIT COMPONENTS (FIG. 3-3)	PAGE 3-5, 3-6
GEARBOX COMPONENTS (FIG. 3-4)	PAGE 3-7, 3-8
U-JOINT COMPONENTS (FIG. 3-5)	PAGE 3-9, 3-10

SECTION 4 - HYDRAULIC ASSEMBLIES

HYDRAULIC CYLINDER ASSEMBLY 2 1/2" X 19" (FIG. 4-1)	PAGE 4-1, 4-2
HYDRAULIC CYLINDER COMPONENTS 2 1/2" X 19" (FIG. 4-2)	PAGE 4-3, 4-4

DECAL ASSEMBLY

Figure 1-1



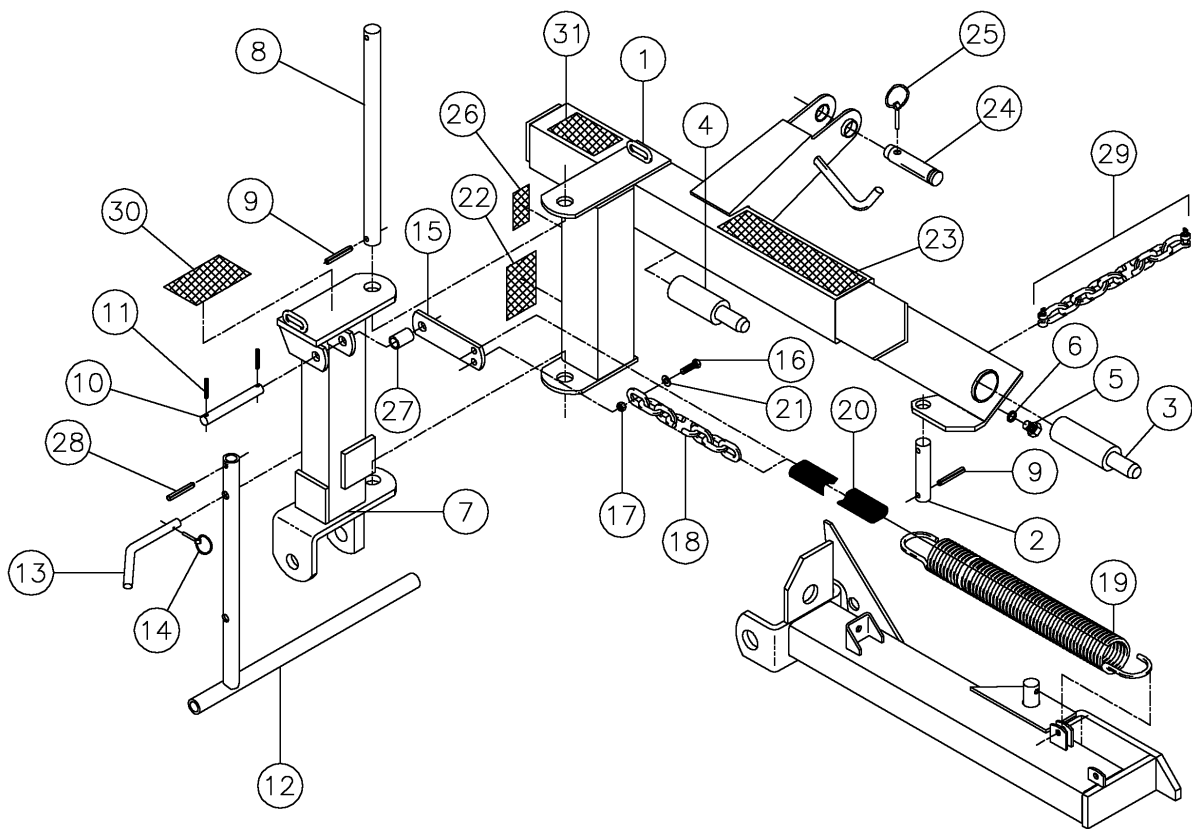
DECAL ASSEMBLY

Figure 1-1

<u>REF. NO.</u>	<u>PART NO.</u>	<u>DESCRIPTION</u>	<u>QTY.</u>				<u>SERIAL NO.</u>			<u>REMARKS</u>
			<u>5030</u>	<u>6030</u>	<u>7030</u>	<u>8030</u>	<u>5030</u>	<u>6030</u>	<u>7030</u>	
1-1	1	7000B-152	DECAL-WARNING	1	1	1	1	181 & UP	221 & UP	
1-1	2	70000-914	DECAL-DANGER	1	1	1	1			
1-1	3	70000-774	DECAL-STRIPES 2 1/2"	2.5'	2.5'	2.5'	2.5'			
1-1	4	2326-940	DECAL-NOTICE TO OWNERS	1	1	1	1			
1-1	5	7000B-932	DECAL-MODEL 5030 3 1/8" HIGH	1	-	-	-			
		7000B-017	DECAL-MODEL 6030 3 1/8" HIGH	-	1	-	-			
		7000B-018	DECAL-MODEL 7030 3 1/8" HIGH	-	-	1	-			
		7000B-532	DECAL-MODEL 8030 3 1/8" HIGH	-	-	-	1			
1-1	6	7000B-021	DECAL-THE GATOR	1	1	1	1			
1-1	7	70000-780	DECAL-8" VERMEER LOGO (AG)	1	1	1	1			
1-1	8	7000B-083	DECAL-DANGER	2	2	2	2			
1-1	9	7000B-192	DECAL-USE 540 PTO	1	1	1	1	181 & UP	221 & UP	
1-1	10	7000B-149	DECAL-WARNING	1	1	1	1	181 & UP	221 & UP	
1-1	11	70000-261	DECAL-WARNING/MOWER SAFETY	1	1	1	1	101 - 180	101 - 220	
1-1	12	7000B-537	DECAL-WARNING/MOWER SAFETY	-	-	-	1			
	84530-203	DECAL-ASSY 5030 MOWER (INC. REF. 1-12)								
	84530-195	DECAL-ASSY 6030 MOWER (INC. REF. 1-12)								
	84530-196	DECAL-ASSY 7030 MOWER (INC. REF. 1-12)								
	84530-204	DECAL-ASSY 8030 MOWER (INC. REF. 1-12)								

FRAME ASSEMBLY

Figure 2-1



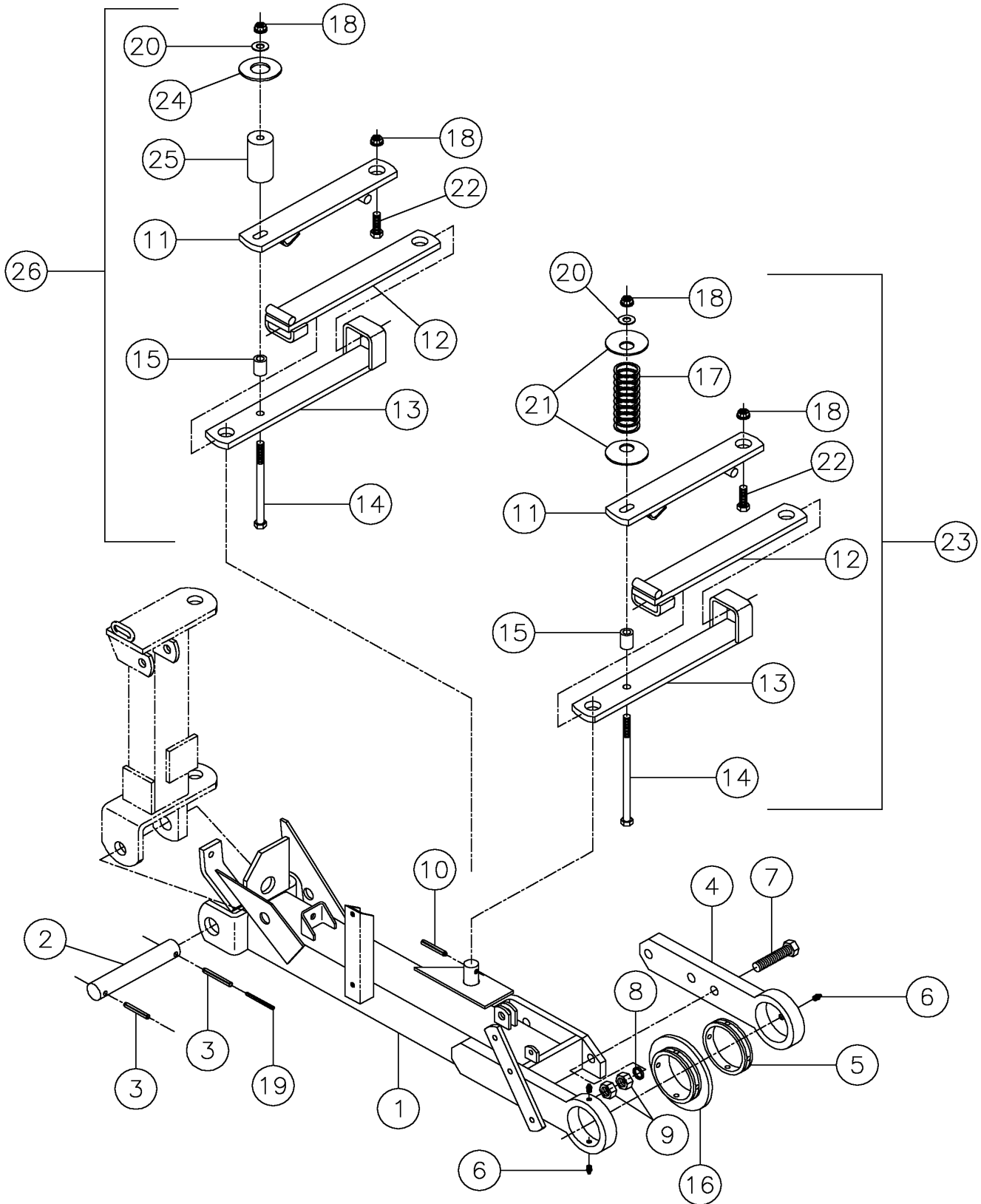
FRAME ASSEMBLY

Figure 2-1

REF. NO.	PART NO.	DESCRIPTION	QTY.				SERIAL NO.			REMARKS
			5030	6030	7030	8030	5030	6030	7030	
2-1	1	127173-001	1	1	1	-				
		510500-361	-	-	-	1				LIFT PINS WELDED IN FRAME
2-1	2	127174-001	1	1	1	1				
2-1	3	94783-001	1	1	1	-				
2-1	4	94784-001	1	1	1	-				
2-1	5	127175-001	2	2	2	-				
2-1	6	506047-016	2	2	2	-				
2-1	7	127177-001	1	1	1	1				
2-1	8	94781-001	1	1	1	1				
2-1	9	94810-001	4	4	4	4				
2-1	10	94740-001	1	1	1	1				
2-1	11	114361-001	2	2	2	2				
2-1	12	121450-001	1	1	1	1				
2-1	13	127180-001	1	1	1	1				
2-1	14	94735-001	1	1	1	1				
2-1	15	506996-035	1	1	1	1				
2-1	16	507092-035	1	1	1	1				
2-1	17	507085-010	1	1	1	1				
2-1	18	506996-039	1	1	1	1				
2-1	19	506996-037	1	1	1	1				
2-1	20	506996-038	1	1	1	1				
2-1	21	507086-010	1	1	1	1				
2-1	22	2326-940	1	1	1	1		101-180	101-220	
2-1	23	70000-914	1	1	1	1				
2-1	24	94947-001	1	1	1	1				
2-1	25	113598-001	1	1	1	1				
2-1	26	7000B-192	1	1	1	1		181 & UP	221 & UP	
2-1	27	127185-001	1	1	1	1				
2-1	28	94615-001	1	1	1	1				
2-1	29	94950-001	1	1	1	1				
2-1	30	7000B-149	1	1	1	1		181 & UP	221 & UP	
2-1	31	7000B-537	-	-	-	1				

FRAME ASSEMBLY (CONT.)

Figure 2-2



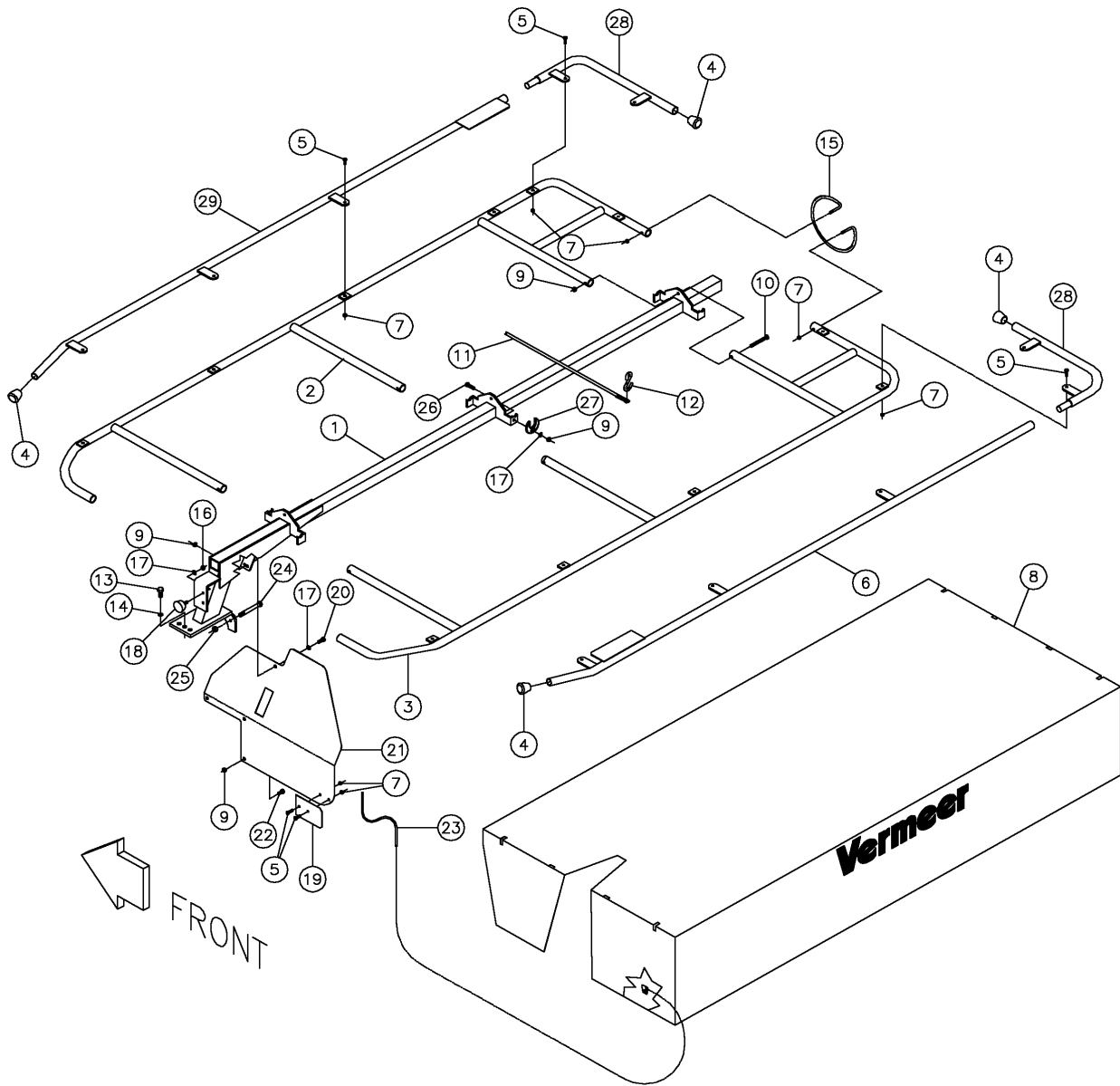
FRAME ASSEMBLY (CONT.)

Figure 2-2

REF. NO.	PART NO.	DESCRIPTION	QTY.				SERIAL NO.				REMARKS	
			5030	6030	7030	8030	5030	6030	7030	8030		
2-2	1	508258-010	FRAME	1	1	1	1					
2-2	2	94780-001	PIN	1	1	1	1					
2-2	3	94906-001	PIN-EXPANSION DIA 10X75 DIN 1481	2	2	2	2					
2-2	4	94919-001	PLATE-BEARING	1	1	1	1					
2-2	5	94754-001	SLIDE BEARING	1	1	1	1					
2-2	6	94755-001	GREASE NIPPLE	2	2	2	2					
2-2	7	506039-090	BOLT-M20 X 90 DIN 931-8.8	2	2	2	2					
2-2	8	94811-001	SPRING WASHER-A20 DIN 127	2	2	2	2					
2-2	9	506041-020	NUT-M20 DIN 934-8	2	2	2	2					
2-2	10	94810-001	PIN-EXPANSION DIA 10X60 DIN 1481	2	2	2	2					
2-2	11	127186-001	UPPER BAR	1	1	1	1					
2-2	12	127187-001	INTERMEDIATE BAR	1	1	1	1					
2-2	13	127190-001	MAIN STRIP BAR	1	1	1	1					
2-2	14	94814-001	BOLT-M14 X 260 DIN 931-8.8	1	1	1	-					
		113601-001	BOLT-M14 X 200 DIN 931-8.8	-	-	-	1					
2-2	15	127189-001	SPACER	1	1	1	1					
2-2	16	94920-001	COLLAR SLIDE BEARING	1	1	1	1					
2-2	17	94777-001	SPRING	1	1	1	-					
2-2	18	506043-014	NUT-M14 DIN 985-8	3	3	3	3					
2-2	19	127191-001	PIN-EXPANSION DIA 6X75 DIN 1481	1	1	1	1					
2-2	20	506046-014	WASHER-A15 DIN 125	1	1	1	1					
2-2	21	94801-001	DISH SPRING	2	2	2	-					
2-2	22	508477-035	SCREW-HCS,M14-2.00X35,10.9,YZ,ISO4017,FT	1	1	1	1					
2-2	23	127190-001	ANTI-SHOCK DEVICE (LONG)	1	1	1	-					
2-2	24	113599-001	WASHER	1	1	1	-					
2-2	25	113600-001	RUBBER SPRING	-	-	-	1					
2-2	26	113602-001	ANTI-SHOCK DEVICE (SHORT)	-	-	-	1					

TOP COVER ASSEMBLY (6030 SN 101-280 & 7030 SN 101-380)

Figure 2-3



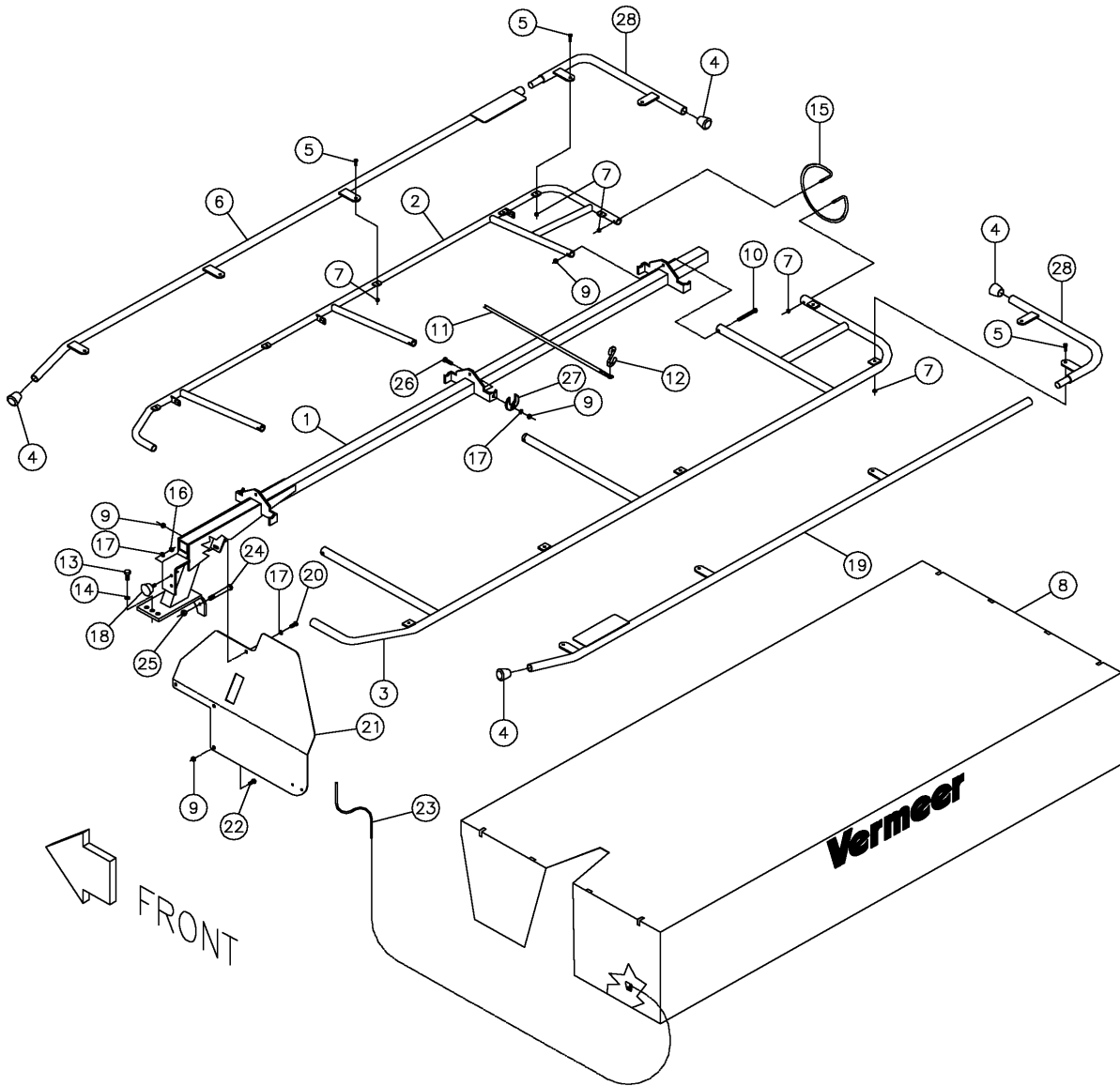
TOP COVER ASSEMBLY (6030 SN 101-280 & 7030 SN 101-380)

Figure 2-3

REF. NO.	PART NO.	DESCRIPTION	QTY.		SERIAL NO.		REMARKS
			6030	7030	6030	7030	
2-3	1	506996-040	1	-			
		506996-041	-	1			
2-3	2	506996-042	1	-			
		506996-043	-	1			
2-3	3	506996-058	1	-			
		506996-059	-	1			
2-3	4	94865-001	4	4			
2-3	5	506032-025	8	9			
2-3	6	508258-006	1	-			
		508258-007	-	1			
2-3	7	507085-008	8	9			
2-3	8	506996-060	1	-			
		506996-061	-	1			
2-3	9	506043-010	8	9			
2-3	10	507092-090	2	3			
2-3	11	94851-001	1	1			
2-3	12	94853-001	1	1			
2-3	13	508477-030	3	3			
2-3	14	506047-014	3	3			
2-3	15	94852-001	1	1			
2-3	16	61656-001	2	2			
2-3	17	506047-010	2	2			
2-3	18	506996-049	2	2			
2-3	19	507718-001	1	1	101 - 180	101 - 220	1ST YR PROD ONLY
2-3	20	507092-025	1	1			
2-3	21	506996-057	1	1			
2-3	22	506033-020	3	3			
2-3	23	506996-050	1	1			
2-3	24	508477-120	2	2			
2-3	25	507085-014	2	2			
2-3	26	507092-035	2	2			
2-3	27	506996-051	2	2			
2-3	28	506996-052	2	2			
2-3	29	508258-004	1	-			
		508258-005	-	2			

TOP COVER ASSEMBLY (5030 SN 101 & UP, 6030 SN 281 & UP, 7030 SN 381 & UP, 8030 SN 101 & UP)

Figure 2-3A



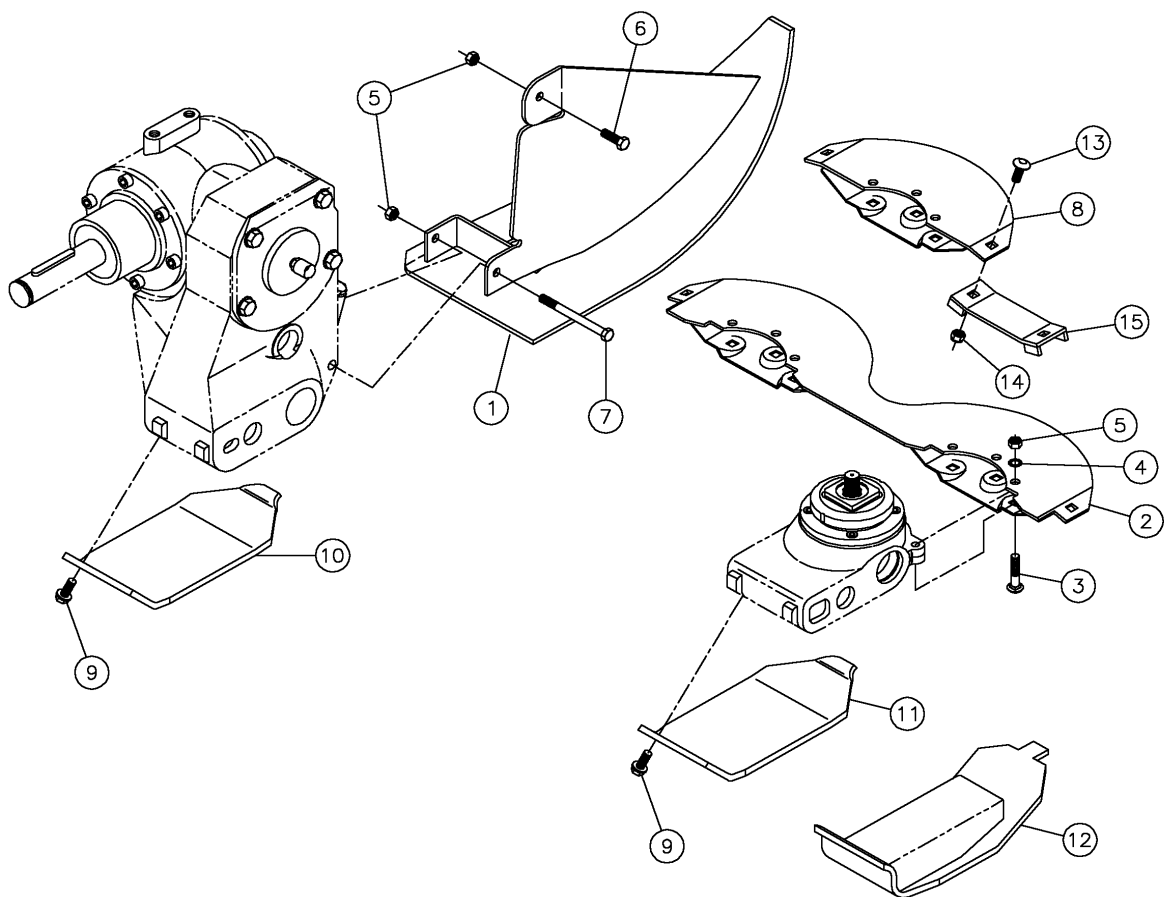
TOP COVER ASSEMBLY (5030 SN 101 & UP, 6030 SN 281 & UP, 7030 SN 381 & UP, 8030 SN 101 & UP)

Figure 2-3A

REF. NO.	PART NO.	DESCRIPTION	QTY.				SERIAL NO.				REMARKS
			5030	6030	7030	8030	5030	6030	7030	8030	
2-3A 1	510502-407	FRAME-ASSEMBLY	1	-	-	-					
	506996-040	FRAME-ASSEMBLY	-	1	-	-					
	506996-041	FRAME-ASSEMBLY	-	-	1	-					
	510173-001	FRAME-ASSEMBLY	-	-	-	1					
2-3A 2	510502-408	FRAME-CURTAIN, FRONT-5 DISC	1	-	-	-					
	510160-001	FRAME-CURTAIN, FRONT-6 DISC	-	1	-	-					CAN BE USED ON ALL SN
	510161-001	FRAME-CURTAIN, FRONT-7 DISC	-	-	1	-					CAN BE USED ON ALL SN
	510500-150	FRAME-CURTAIN, FRONT-8 DISC	-	-	-	1					
2-3A 3	510502-409	FRAME-CURTAIN, REAR-5 DISC	1	-	-	-					
	506996-058	FRAME-CURTAIN, REAR-6 DISC	-	1	-	-					
	506996-059	FRAME-CURTAIN, REAR-7 DISC	-	-	1	-					
	510500-151	FRAME-CURTAIN, REAR-8 DISC	-	-	-	1					
2-3A 4	94865-001	PLUG-RUBBER END	4	4	4	4					PLUG REPLACED CAP
2-3A 5	506032-025	SCREW-HCS M8-1.25X25,8.8,YZ,D933	8	8	9	9					
2-3A 6	510502-412	FRAME EXTENSION-FRONT 5 DISC	1	-	-	-					
	508258-004	FRAME EXTENSION-FRONT 6 DISC	-	1	-	-					
	508258-005	FRAME EXTENSION-FRONT 7 DISC	-	-	1	-					
	510500-152	FRAME EXTENSION-FRONT 8 DISC	-	-	-	1					
2-3A 7	507085-008	NUT-HEX M8-1.25,YZ, D985	8	8	9	9					
2-3A 8	510502-410	CURTAIN - 5 DISC	1	-	-	-					
	506996-060	CURTAIN - 6 DISC	-	1	-	-					
	506996-061	CURTAIN - 7 DISC	-	-	1	-					
	510500-155	CURTAIN - 8 DISC	-	-	-	1					
2-3A 9	506043-010	NUT-HEX NYL M10-1.50, YZ, D985	8	8	9	9					
2-3A 10	507092-090	SCREW-HCS,M10-1.50X90,8.8,YZ,D931	2	2	3	3					
2-3A 11	94851-001	ELASTIC BAND	2	2	3	3					
2-3A 12	94853-001	S-HOOK	4	4	6	6					
2-3A 13	508477-030	SCREW-HCS,M14-2.00X30,10.9,YZ,D933	3	3	3	3					
2-3A 14	506047-014	WASHER-LOCK M14	3	3	3	3					
2-3A 15	94852-001	SAFETY COVER PROTECTOR	1	1	1	1					
2-3A 16	61656-001	NUT-HEX,M10-1.50,CL8,YZ,D934	2	2	2	2					
2-3A 17	506047-010	WASHER-LOCK M10	2	2	2	2					
2-3A 18	506996-049	RUBBER BUMPER	2	2	2	2					
2-3A 19	510502-411	FRAME EXTENSION-REAR 5 DISC	1	-	-	-					
	508258-006	FRAME EXTENSION-REAR 6 DISC	-	1	-	-					
	508258-007	FRAME EXTENSION-REAR 7 DISC	-	-	1	-					
	510500-153	FRAME EXTENSION-REAR 8 DISC	-	-	-	1					
2-3A 20	507092-025	SCREW-HCS,M10-1.50X25,8.8,YZ,D933	1	1	1	1					
2-3A 21	506996-057	PROTECTION PLATE	1	1	1	1					
2-3A 22	506033-020	SCREW-HCS,M10-1.50X20,8.8,YZ,D933	3	3	3	3					
2-3A 23	506996-050	ROPE	1	1	1	1					
2-3A 24	508477-120	SCRW-HCS,M14-2.00X120,10.9,YZ,D931	2	2	2	2					
2-3A 25	507085-014	NUT-HEX,LOCK,M14-2.00,YZ,D985	2	2	2	2					
2-3A 26	507092-035	SCREW-HCS,M10-1.50X35,8.8,YZ,D933	2	2	2	2					
2-3A 27	506996-051	NYLON GRIP BLOCK	2	2	2	2					
2-3A 28	506996-052	TUBE-CURTAIN END	2	2	2	2					

SHOE/SKID ASSEMBLY

Figure 2-4



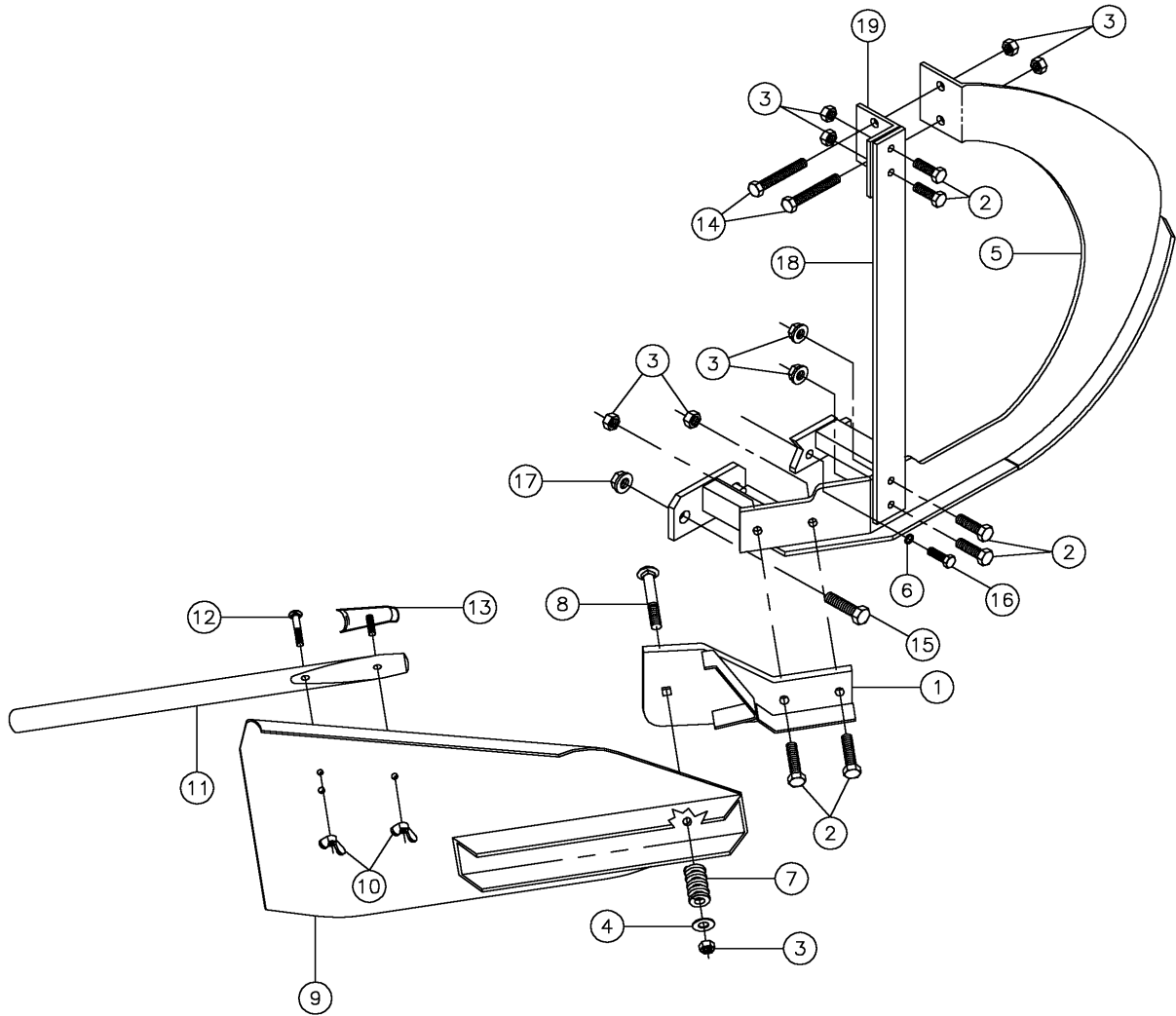
SHOE/SKID ASSEMBLY

Figure 2-4

<u>REF. NO.</u>	<u>PART NO.</u>	<u>DESCRIPTION</u>	<u>QTY.</u>				<u>SERIAL NO.</u>				<u>REMARKS</u>	
			<u>5030</u>	<u>6030</u>	<u>7030</u>	<u>8030</u>	<u>5030</u>	<u>6030</u>	<u>7030</u>	<u>8030</u>		
2-4	1	506996-008	INNER SHOE	1	1	1	1					
2-4	2	506996-073	DOUBLE WIDE SKID	2	3	3	4					
2-4	3	507097-045	BOLT-CARG,M10-1.50X45,8.8,YZ,D603,FT	15	18	21	24					
2-4	4	506047-010	WASHER-LOCK,M10.5,D6798A	15	18	21	24					
2-4	5	507085-010	NUT-HEX,M10-1.50,CL8,YZ,D934	17	20	23	26					
2-4	6	507092-030	SCREW-HCS,M10-1.50X30,8.8,YZ,D933	1	1	1	1					
2-4	7	507092-110	SCREW-HCS,M10-1.50X110,8.8,YZ,ISO4014,PT	1	1	1	1					
2-4	8	131523-001	SKID	1	-	1	-					
2-4	9	507092-025	SCREW-HCS,M10-1.50X25,8.8,YZ,D933	10	12	14	16					
2-4	10	506996-009	SKID SHOE-INNER	1	1	1	1					
2-4	11	506996-011	SKID SHOE	4	5	6	7					
2-4	12	508226-001	TOPPING SHOE-SPLENDIMO	A/R	A/R	A/R	A/R					
2-4	13	507097025	BOLT-CARG,M8-1.25X25,8.8,YZ,D603,FT	2	-	2	-					
2-4	14	506043010	NUT-HEX,NYL,M10 -1.50,YZ,D985	2	-	2	-					
2-4	15	510502404	LONG STONE PROTECTOR	1	-	1	-					

END SUPPORT ASSEMBLY

Figure 2-5



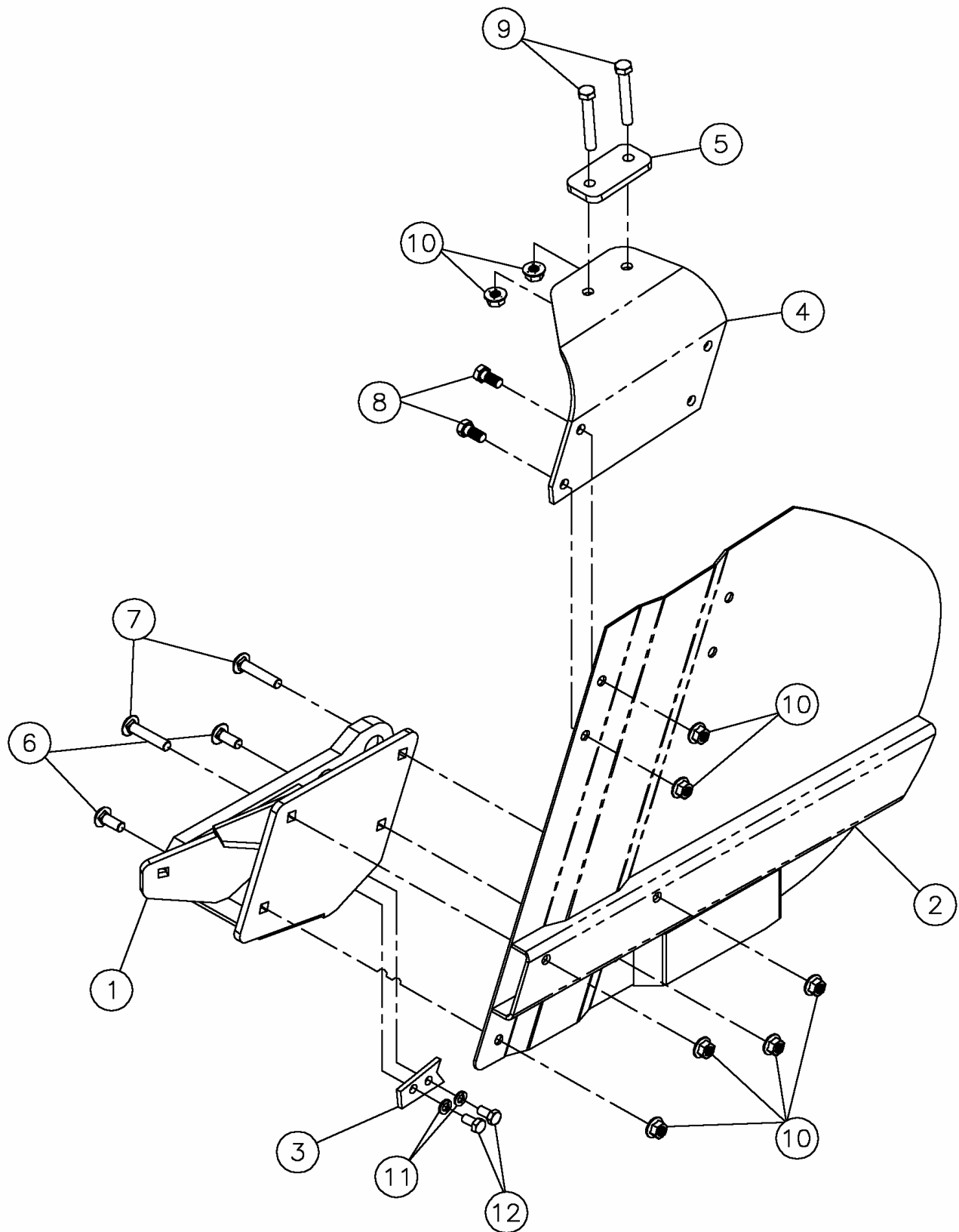
END SUPPORT ASSEMBLY

Figure 2-5

REF. NO.	PART NO.	DESCRIPTION	QTY.				SERIAL NO.				REMARKS	
			5030	6030	7030	8030	5030	6030	7030	8030		
2-5	1	507712-001	SWATHBOARD MOUNT	1	1	1	1					
2-5	2	507613-035	SCREW-HFS,M12-1.75X35,10.9,YZ	6	6	6	6	101-280	101-380			
		507613-035	SCREW-HFS,M12-1.75X35,10.9,YZ	2	2	2	2	281&UP	381&UP			
2-5	3	507085-012	NUT-HEXFLG LOCK, M12-1.75,10.9,YZ	8	8	8	8	101-280	101-380			
		507085-012	NUT-HEXFLG LOCK, M12-1.75,10.9,YZ	4	4	4	4	281&UP	381&UP			
2-5	4	507086-012	WASHER-FLAT, M12, LARGE RIM	1	1	1	1					
2-5	5	507708-001	CROP DIVER	1	1	1	1					
2-5	6	506047-010	WASHER-LOCK M10	2	2	2	2					
2-5	7	94800-001	COMPRESSION SPRING	1	1	1	1					
2-5	8	507098-080	BOLT-M12 X 80 CARRIAGE	1	1	1	1					
2-5	9	94772-001	SWATHBOARD	1	1	1	1					
2-5	10	94794-001	WING NUT-M8	2	2	2	2					
2-5	11	94774-001	SWATH POLE	1	1	1	1					
2-5	12	507095-045	BOLT-M8 X 45 CARRIAGE	1	1	1	1					
2-5	13	94773-001	FASTENING PIECE	1	1	1	1					
2-5	14	507093-080	SCREW-HCS, M12-1.75X80, 8.8, YZ	2	2	2	2					
2-5	15	507094-050	SCREW-HCS, M14-2.00X50, 8.8, YZ	1	1	1	1					
2-5	16	507612-030	SCREW-HFS,M10-1.50X30,10.9,YZ	2	2	2	2					
2-5	17	507085-014	NUT-HEXFLNG LOCK, M14-2.00, 10.9, YZ	1	1	1	1					
2-5	18	507702-001	BAR	1	1	1	1	101-280	101-380		REMOVED	
2-5	19	507701-001	ANGLE	1	1	1	1					

CROP DIVIDER ASSEMBLY

Figure 2-6



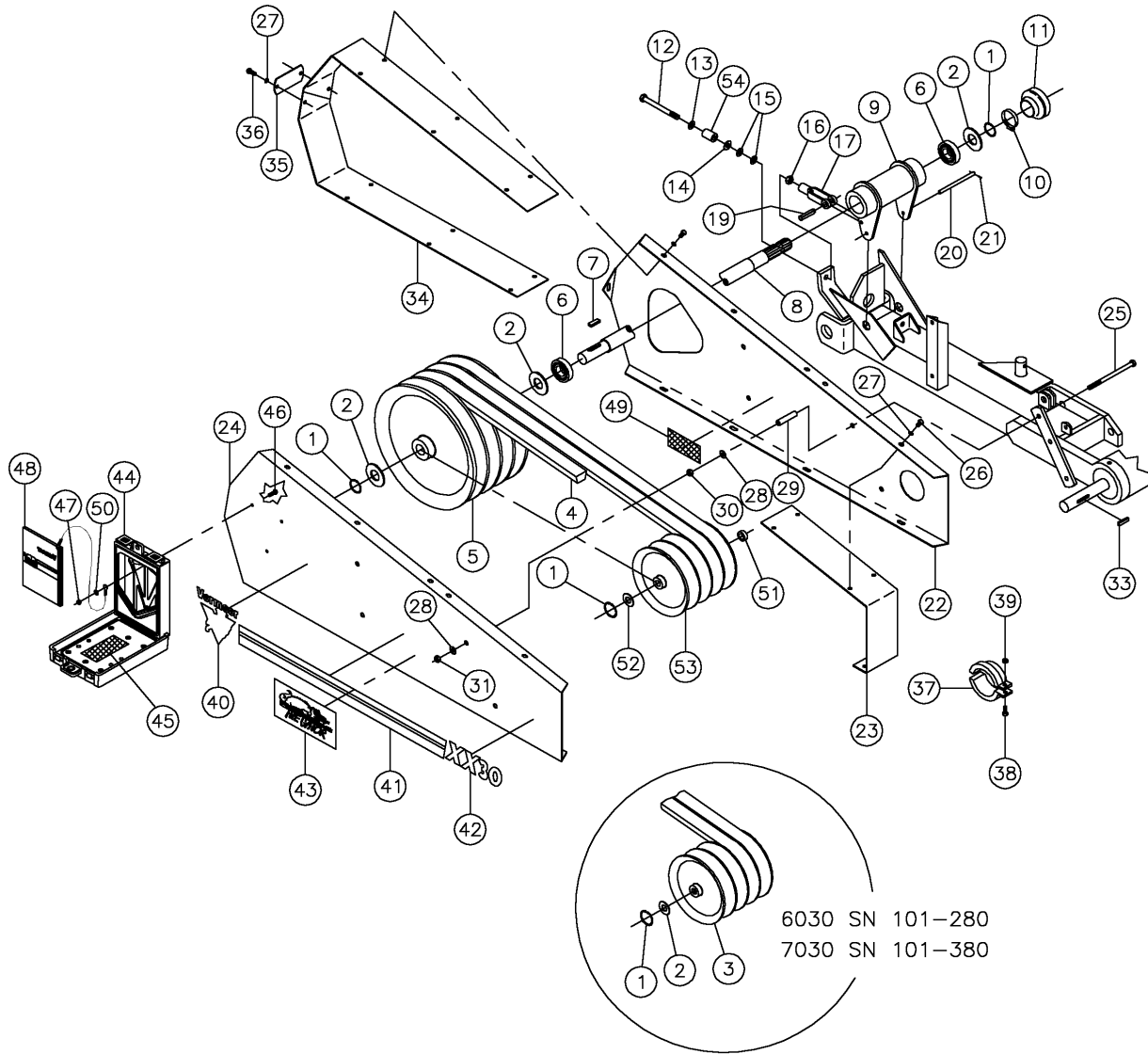
CROP DIVIDER ASSEMBLY

Figure 2-6

<u>REF. NO.</u>	<u>PART NO.</u>	<u>DESCRIPTION</u>	<u>QTY.</u>				<u>SERIAL NO.</u>			<u>REMARKS</u>	
			<u>5030</u>	<u>6030</u>	<u>7030</u>	<u>8030</u>	<u>5030</u>	<u>6030</u>	<u>7030</u>		<u>8030</u>
2-6	1	510504-259	CROP DIVIDER MOUNT WELDMENT, 30 SERIES	1	1	1	1				
2-6	2	510504-260	CROP DIVIDER WELDMENT, 30 SERIES	1	1	1	1				
2-6	3	502488-001	PLATE - SECURING TIEBOLT NUT	1	1	1	1				
2-6	4	510504-344	PLATE - CURTAIN SUPPORT	1	1	1	1				
2-6	5	510504-342	PLATE - TUBE MOUNT	1	1	1	1				
2-6	6	506050-030	BOLT-CARG,M12-1.75X30,Short Sq.,8.8,YZ	2	2	2	2				
2-6	7	506050-060	BOLT-CARG,M12-1.75X60,Short Sq.,8.8,YZ	2	2	2	2				
2-6	8	507093-025	SCREW-HCS,M12-1.75X25,8.8,YZ	4	4	4	4				
2-6	9	507407-080	SCREW-HCS,M12-1.75X80,10.9,YZ	2	2	2	2				
2-6	10	507085-012	NUT-HEXFLNG LOCK, M12-1.75,10.9,YZ	10	10	10	10				
2-6	11	506047-010	WASHER-LOCK,M10,YZ,D127B	2	2	2	2				
2-6	12	507092-020	SCREW-HCS,M10-1.50X20,8.8,YZ	2	2	2	2				

BELT DRIVE ASSEMBLY

Figure 3-1



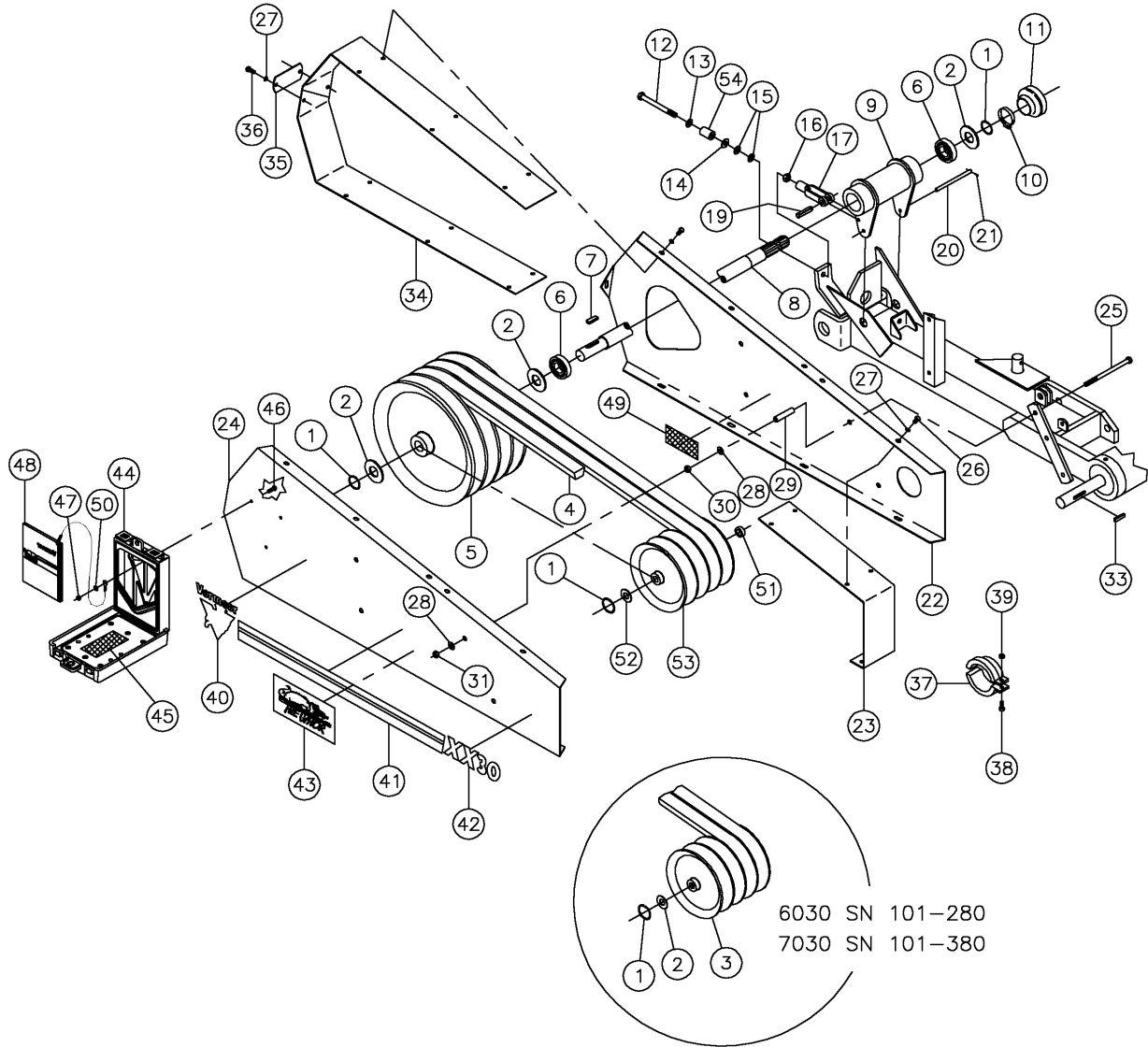
BELT DRIVE ASSEMBLY

Figure 3-1

REF. NO.	PART NO.	DESCRIPTION	QTY.				SERIAL NO.				REMARKS
			5030	6030	7030	8030	5030	6030	7030	8030	
3-1	1	94606-001	RING-RETAINING	-	3	3	-	101-280	101-380		
		94606-001	RING-RETAINING	2	2	2	2	281&UP	381&UP		
3-1	2	94610-001	RING-SUPPORT	-	4	4	4	101-280	101-380		
		94610-001	RING-SUPPORT	3	3	3	3	281&UP	381&UP		
3-1	3	94624-001	BELT DISC	-	1	1	-	101-280	101-380		#51, 52 & 53 CAN REPL. 3
3-1	4	114355-001	V-BELT	3	4	4	-				
		510501-759	V-BELT OPTIBELT-REDPOWER	-	-	-	5				
3-1	5	94613-001	BELT DISC	-	1	1	-				
		510500-160	PULLEY 5 GROOVE	-	-	-	1				
		94612-001	PULLEY 3 GROOVE	1	-	-	-				
3-1	6	94607-001	BALL BEARING	2	2	2	2				
3-1	7	94611-001	KEY-SUNK	1	1	1	1				
3-1	8	94609-001	DRIVE SHAFT	1	1	1	1				
3-1	9	502890-029	SHAFT HOUSING	1	1	1	1				
3-1	10	94605-001	HOSE CLAMP	1	1	1	1				
3-1	11	94604-001	PROTECTION CONE	1	1	1	1				
3-1	12	507407-090	SCREW-HCS,M12-1.75X90,10.9,YZ	-	1	1	1	101-438	101-755	101-125	
		507407-150	SCREW-HCS,M12-1.75X150,10.9,YZ-FT	1	1	1	1	439&UP	756&UP	126&UP	
3-1	13	94619-001	WASHER-FLAT,A13 D125	1	1	1	1				
3-1	14	106411-001	WASHER-FLAT,A13 D9021	1	1	1	1				
3-1	15	106412-001	WASHER-A13 D9021,NYL 6-6	-	2	2	2	101-438	101-755	101-125	
		106412-001	WASHER-A13 D9021,NYL 6-6	4	4	4	4	439&UP	756&UP	126&UP	
3-1	16	506043-012	NUT-HEX,NYL,M12-1.75,YZ,D934	1	1	1	1				
3-1	17	94616-001	ADJUSTING YOKE	1	1	1	1				
3-1	18	114361-001	PIN-EXPANSION	2	2	2	2				
3-1	19	94617-001	PIN	1	1	1	1				
3-1	20	94615-001	PIN-EXPANSION,DIA M8X50,D1481	2	2	2	2				
3-1	21	502890-030	PIN-HINGE	2	2	2	2				
3-1	22	506991-001	BELT SHIELD INNER	1	1	1	1				
3-1	23	506992-001	COVER-END	1	1	1	-				
		510500-162	COVER-END 8 DISC	-	-	-	1				
3-1	24	506993-001	BELT SHIELD OUTER	1	1	1	1				
3-1	25	506033-160	SCREW-HCS,M10-1.50X160,8.8,YZ	2	2	2	2				
3-1	26	506032-016	SCREW-HCS,M8-1.25X16,8.8,YZ	18	18	18	18				
3-1	27	508483-008	WASHER-EXT.SERRATED LOCK,M8	20	20	20	20				
3-1	28	94630-001	WASHER-SPRING	12	12	12	12				
3-1	29	114630-001	SPACER	4	4	4	-				
		510500-163	SPACER (127 MM)	-	-	-	4				
3-1	30	61656-001	NUT-HEX,M10-1.50,CL8,YZ,D934	4	4	4	4				
3-1	31	507085-010	NUT-HEX,M10-1.50,YZ,D985	4	4	4	4				
3-1	32	506033-150	SCREW-HCS,M10-1.25X150,8.8,YZ	2	2	2	2				
3-1	33	94677-001	KEY-A10X8X70,D6885	1	1	1	1				
3-1	34	506994-001	PLATE-COVER	2	2	2	-				
		510500-164	PLATE - COVER 8 DISC	-	-	-	2				
3-1	35	506995-001	PLATE-MOUNT	1	1	1	-				
		510500-165	PLATE-MOUNT 8 DISC	-	-	-	1				
3-1	36	506032-020	SCREW-HCS,M8-1.25X20,8.8,YZ	2	2	2	2				
3-1	37	94945-001	PULLEY REMOVER TOOL	2	2	2	2				
3-1	38	94688-001	SCREW-CYL HCS,M8X20,8.8,YZ	2	2	2	2				
3-1	39	507085-008	NUT-HEX,M8-1.25,CL8,YZ,D934	2	2	2	2				
3-1	40	70000-780	DECAL-8" VERMEER LOGO	1	1	1	1				
3-1	41	70000-774	DECAL-2 1/2" VERMEER STRIPE	2.5'	2.5'	2.5'	2.5'				
3-1	42	7000B-932	DECAL-MODEL 5030-3 1/8" HIGH	1	-	-	-				
		7000B-017	DECAL-MODEL 6030-3 1/8" HIGH	-	1	-	-				
		7000B-018	DECAL-MODEL 7030-3 1/8" HIGH	-	-	1	-				
		7000B-532	DECAL-MODEL 8030-3 1/8" HIGH	-	-	-	1				
3-1	43	7000B-021	DECAL-THE GATOR	1	1	1	1				
3-1	44	142410-001	MANUAL BOX-MINI	1	1	1	1	181&UP	221&UP		
3-1	45	2326-940	DECAL-NOTICE TO OWNER	1	1	1	1	181&UP	221&UP		
3-1	46	507610-025	SCREW-HFS M6X25,10.9	3	3	3	3	181&UP	221&UP		
3-1	47	507085-006	NUT-HEX FLG LOCK, M6-1.00,10.9 YZ D6927	3	3	3	3	181&UP	221&UP		

BELT DRIVE ASSEMBLY (CONT.)

Figure 3-1



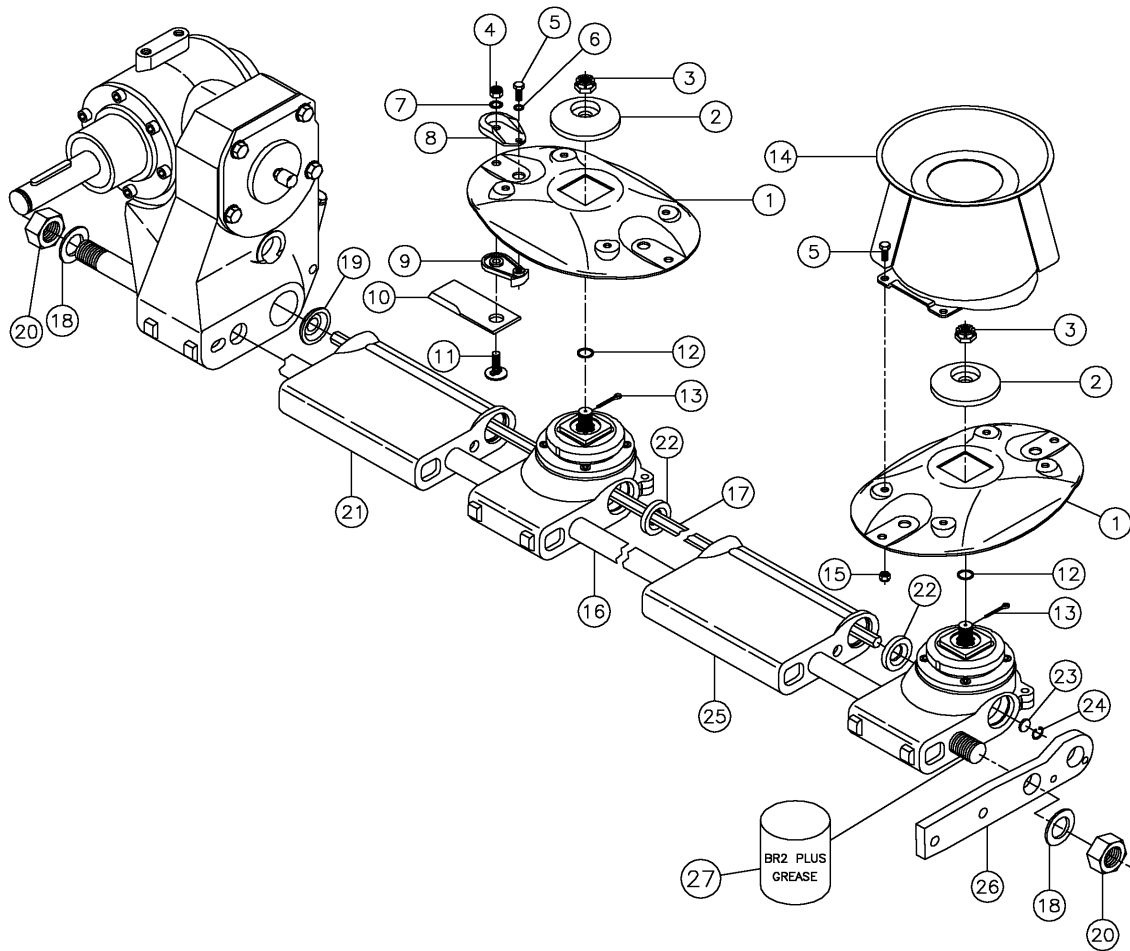
BELT DRIVE ASSEMBLY (CONT.)

Figure 3-1

REF. NO.	PART NO.	DESCRIPTION	QTY.				SERIAL NO.			REMARKS
			5030	6030	7030	8030	5030	6030	7030	
3-1 48	508286-001	OPERATORS HANDBOOK ASSEMBLY	-	1	1	-	101-180	101-220		
	509134-001	OPERATORS HANDBOOK ASSEMBLY	-	1	1	-	181-280	221-380		
	510207-001	OPERATORS HANDBOOK ASSEMBLY	1	1	1	1	281&UP	381&UP		
3-1 49	7000B-152	DECAL-WARNING	1	1	1	1	181&UP	221&UP		
3-1 50	507086-006	WASHER-FLAT,M6,LARGE RIM	3	3	3	3	181&UP	221&UP		
3-1 51	510169-001	SPACER-INNER	-	1	1	-	281&UP	381&UP		
	510504-877	SPACER-INNER	1	-	-	-				
	510500-158	SPACER-INNER (25.5 MM)	-	-	-	1				
3-1 52	510168-001	SPACER-OUTER	-	1	1	-	281&UP	381&UP		
	510504-876	SPACER-OUTER	1	-	-	-				
	510500-159	SPACER-OUTER (18.5 MM)	-	-	-	1				
3-1 53	510502-405	PULLEY-3 GROOVE	1	-	-	-				
	510167-001	PULLEY-4 GROOVE	-	1	1	-	281&UP	381&UP		
	510500-157	PULLEY-5 GROOVE	-	-	-	1				
3-1 54	510502-406	SPACER	1	1	1	1	439&UP	756&UP	126&UP	

CUTTER BAR ASSEMBLY

Figure 3-2



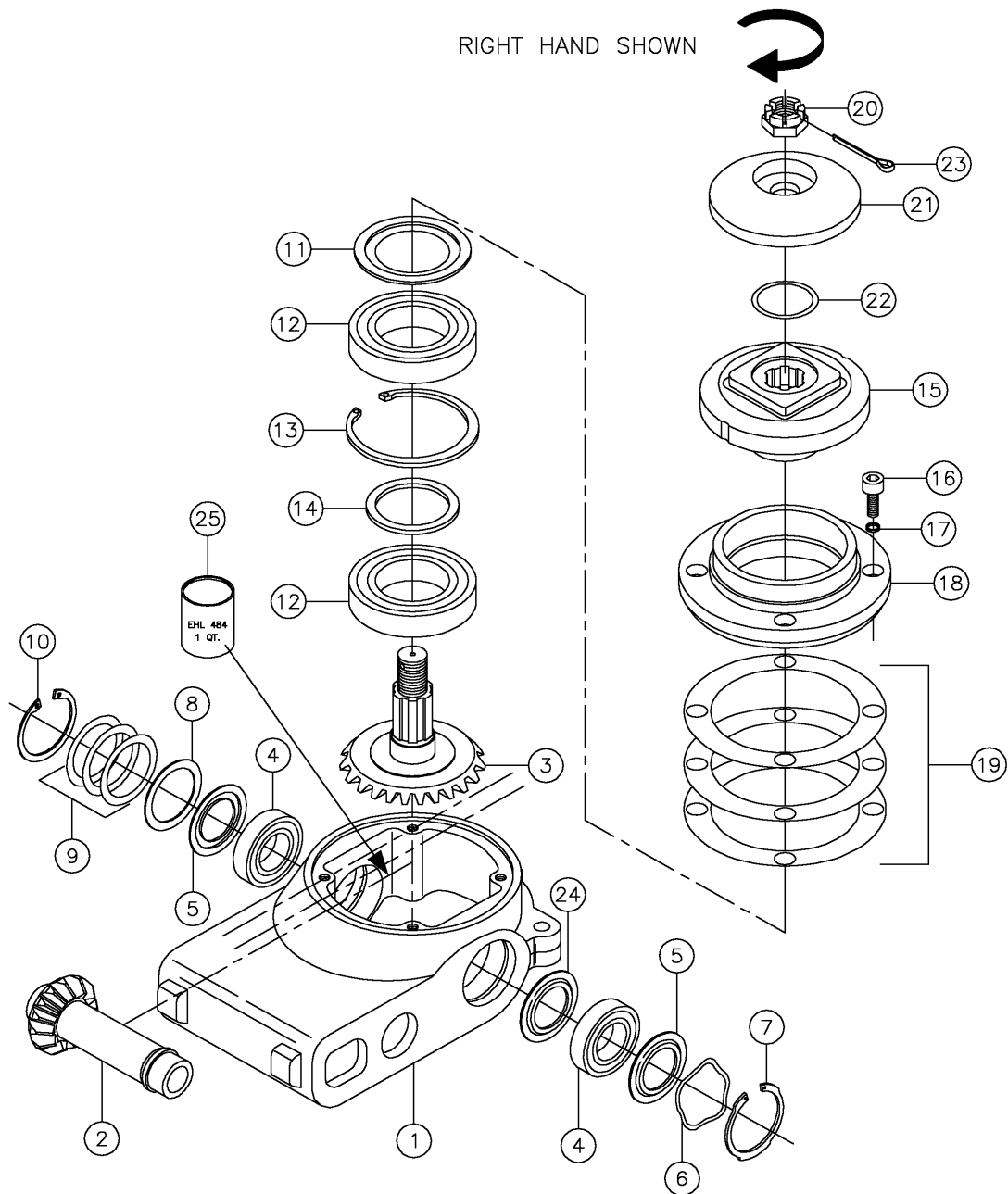
CUTTER BAR ASSEMBLY

Figure 3-2

REF. NO.	PART NO.	DESCRIPTION	QTY.				SERIAL NO.				REMARKS	
			5030	6030	7030	8030	5030	6030	7030	8030		
3-2	1	131522-001	DISC-4MM	5	6	7	8					
3-2	2	506996-067	PRESSURE BLOCK	5	6	7	8					
3-2	3	506996-068	NUT-CASTLE M22 X 1.5	5	6	7	8					
3-2	4	506043-010	NUT-HEX, NYL, M10-1.50, YZ, D985	10	12	14	16					
3-2	5	508475-020	SCREW-HCS, M8-1.25X20, 10.9, YZ, ISO 4017, FT	14	16	18	20					
3-2	6	508483-008	WASHER-EXT. SER. LOCK, M8.4, D6798A	10	12	14	16					
3-2	7	508483-010	WASHER-EXT. SER. LOCK, M10, D6798A	10	12	14	16					
3-2	8	131549-001	PROTECTOR NUT	10	12	14	16					
3-2	9	94792-001	KNIFE STOP	10	12	14	16					
3-2	10	93596-001	BLADE-MOW DISC CCW ROT	4	6	6	8					
		93596-002	BLADE-MOW DISC CW ROT	6	6	8	8					
3-2	11	94703-001	BOLT	10	12	14	16					
3-2	12	506996-069	O-RING	5	6	7	8					
3-2	13	510-009	PIN-COTTER	5	6	7	8					
3-2	14	131550-001	HAT-HIGH RING	1	1	1	1					
3-2	15	507085-008	NUT-HEX, M8-1.25, YZ, D985	4	4	4	4					
3-2	16	510502-413	CONNECTING ROD WITH NUT	1	-	-	-					
		506996-013	CONNECTING ROD WITH NUT	-	1	-	-					
		506996-014	CONNECTING ROD WITH NUT	-	-	1	-					
		510500-166	CONNECTING ROD WITH NUT	-	-	-	1					
3-2	17	506996-015	HEX SHAFT (1167MM)	-	2	-	-					
		510502-416	HEX SHAFT (792MM)	1	-	-	-					
		510165-001	HEX SHAFT (1212MM)	1	-	-	-					
		506996-016	HEX SHAFT-RH (1547MM)	-	-	1	2					
		506996-062	HEX SHAFT-LH (1203MM)	-	-	1	-					
3-2	18	94717-001	SUPPORT - RING	2	2	2	2					
3-2	19	506996-018	CENTERING RING	1	1	1	1					
3-2	20	507090-030	NUT-HEX, M30-1.5, CL10, YZ, ISO4032	1	1	1	1					
3-2	21	506996-019	STANDARD-SPACER	4	6	6	8					
3-2	22	94707-001	CENTRING RING	9	11	13	15					
3-2	23	94672-001	DISC-5MM	1	-	-	-					
		12769-001	DISC-18MM	-	1	1	1					
3-2	24	94673-001	RETAINING RING	1	1	1	1					
3-2	25	506996-020	SPACER-LONG	1	-	1	-					2ND SPACER FROM MAIN BOX
3-2	26	510504-259	MOUNT-END SPLENDIMO	1	1	1	1					
3-2	27	247220-982	BR2 PLUS GREASE	-	-	-	-					

CUTTER UNIT COMPONENTS

Figure 3-3



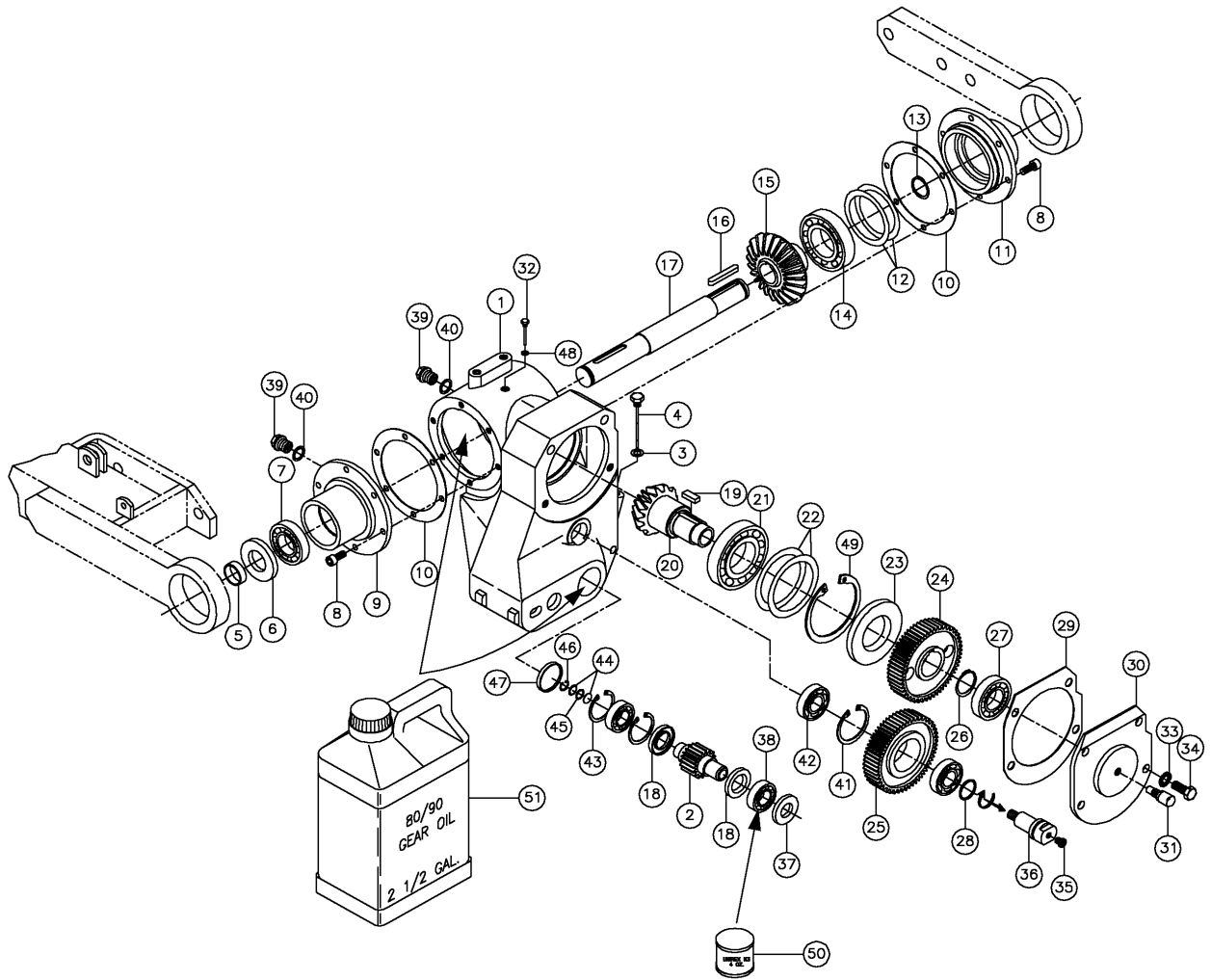
CUTTER UNIT COMPONENTS

Figure 3-3

REF. NO.	PART NO.	DESCRIPTION	QTY.				SERIAL NO.				REMARKS	
			5030	6030	7030	8030	5030	6030	7030	8030		
3-3	1	506996-066	HOUSING-CUTTER UNIT	1	1	1	1					
3-3	2	506996-065	GEAR-PINION	1	1	1	1					
3-3	3	506996-001	GEAR-PINION	1	1	1	1					
3-3	4	94692-001	BALL BEARING	2	2	2	2					
3-3	5	94693-001	RING	2	2	2	2					
3-3	6	94694-001	WASHER-SPRING	1	1	1	1					
3-3	7	94695-001	RETAINING RING	1	1	1	1					
3-3	8	94697-001	SHIM	1	1	1	1					
3-3	9	506996-003	SHIM	A/R	A/R	A/R	A/R					
3-3	10	94803-001	RET RING	1	1	1	1					
3-3	11	94685-001	RING	1	1	1	1					
3-3	12	94682-001	UNIT BALL BEARING	2	2	2	2					
3-3	13	94684-001	RETAINING RING	1	1	1	1					
3-3	14	94683-001	SUPPORT - RING	1	1	1	1					
3-3	15	500044-001	HUB	1	1	1	1					
3-3	16	507714-025	SCREW-M8 X 25 SHC 12.9 DIN912	4	4	4	4					
3-3	17	124624-001	WASHER-M8	4	4	4	4					
3-3	18	506996-004	BEARING-HOUSING	1	1	1	1					
3-3	19	506996-005	SHIM SET	1	1	1	1					
3-3	20	508501-022	NUT-CASTLE M22 X 1.5 DIN937-22H	1	1	1	1					
3-3	21	506996-067	PRESSURE BLOCK	1	1	1	1					
3-3	22	506996-069	O-RING	1	1	1	1					
3-3	23	510-009	COTTER KEY	1	1	1	1					
3-3	24	502890-037	RING	1	1	1	1					
3-3	25	102616-001	EHL 484 CALC-LITH GREASE/QUART	A/R	A/R	A/R	A/R					
		506996-006	CUTTER UNIT-LH (INC. REF. 1-24)(NOT SHOWN)									
		506996-007	CUTTER UNIT-RH (INC. REF. 1-24)(SHOWN)									

GEARBOX COMPONENTS

FIGURE 3-4



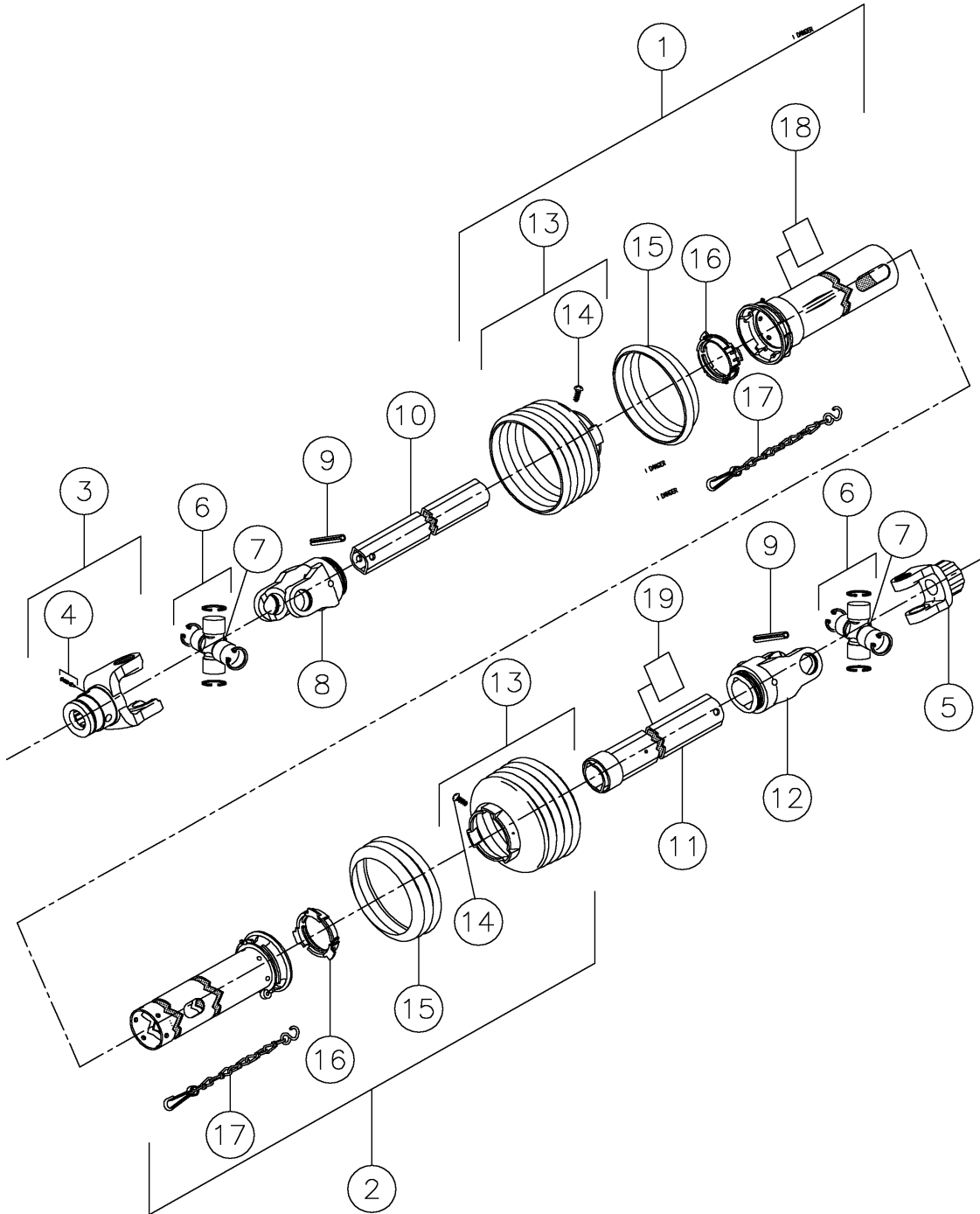
GEARBOX COMPONENTS

FIGURE 3-4

REF. NO.	PART NO.	DESCRIPTION	QTY.				SERIAL NO.				REMARKS	
			5030	6030	7030	8030	5030	6030	7030	8030		
3-4	1	131561-002	GEARBOX-CASTING	1	1	1	1					
3-4	2	131561-040	GEAR-HEX BORE	1	1	1	1					
3-4	3	131561-004	SEAL	1	1	1	1					
3-4	4	131561-005	DIPSTICK	1	1	1	1					
3-4	5	131561-006	RING	1	1	1	1					
3-4	6	131561-007	RING	1	1	1	1					
3-4	7	131561-008	BEARING	1	1	1	1					
3-4	8	94641-001	CYL. HEAD SC M10X25 DIN912-12.9	12	12	12	12					
3-4	9	131561-009	SHAFT HOUSING	1	1	1	1					
3-4	10	131561-010	GASKET	2	2	2	2					
3-4	11	131561-011	SHAFT HOUSING	1	1	1	1					
3-4	12	131561-012	SHIM SET	1	1	1	1					
3-4	13	94606-001	RETAINING RING	1	1	1	1					
3-4	14	131561-014	BEARING	1	1	1	1					
3-4	15	131561-015	GEAR-PINION	1	1	1	1					
3-4	16	94648-001	KEY-A10X8X63, D6885	1	1	1	1					
3-4	17	131561-017	SHAFT	1	1	1	1					
3-4	18	131561-039	RING	2	2	2	2					
3-4	19	131561-019	KEY-B12X8X30, D6885	1	1	1	1					
3-4	20	131561-020	GEAR-CONICAL	1	1	1	1					
3-4	21	131561-021	BALL BEARING	1	1	1	1					
3-4	22	131561-022	SHIM SET	1	1	1	1					
3-4	23	131561-023	RING	1	1	1	1					
3-4	24	131561-024	GEAR	1	1	1	1					
3-4	25	131561-025	GEAR-INTERMEDIATE	1	1	1	1					
3-4	26	94657-001	RETAINING RING	1	1	1	1					
3-4	27	131561-027	BALL BEARING	1	1	1	1					
3-4	28	131561-028	O-RING	1	1	1	1					
3-4	29	131561-029	GASKET	1	1	1	1					
3-4	30	131561-030	COVER	1	1	1	1					
3-4	31	131561-031	VENT	1	1	1	1					
3-4	32	131561-032	DECOMPRESSOR	1	1	1	1					
3-4	33	508483-014	WASHER-EXT. SER. LOCK, M14, D6798A	2	2	2	2					
3-4	34	506035-040	SCREW-HCS,M14-2.00X40,8.8,YZ,D933,FT	2	2	2	2					
3-4	35	94664-001	PLUG	1	1	1	1					
3-4	36	131561-036	SHAFT	1	1	1	1					
3-4	37	131561-037	RING	1	1	1	1					
3-4	38	131561-038	BALL BEARING	2	2	2	2					
3-4	39	131561-050	PLUG	2	2	2	2					
3-4	40	131561-051	SEAL	2	2	2	2					
3-4	41	131561-041	RETAINING RING	1	1	1	1					
3-4	42	131561-042	BALL BEARING	2	2	2	2					
3-4	43	131561-043	RETAINING RING	2	2	2	2					
3-4	44	131561-044	PLUG	2	2	2	2					
3-4	45	131561-045	O-RING	1	1	1	1					
3-4	46	94673-001	RETAINING RING	1	1	1	1					
3-4	47	131561-047	RING	1	1	1	1					
3-4	48	94804-001	RING	1	1	1	1					
3-4	49	131561-049	RETAINING RING	1	1	1	1					
3-4	50	252982-982	GREASE-UNIREX N3, 4OZ	A/R	A/R	A/R	A/R					
3-4	51	99663-002	80W90 TRANS FLUID	A/R	A/R	A/R	A/R					
		99663-003	80W90 TRANS OIL 5 GALLON	A/R	A/R	A/R	A/R					
		131561-001	GEARBOX ASSEMBLY (INC. REF. 1-49)									

U-JOINT COMPONENTS

Figure 3-5



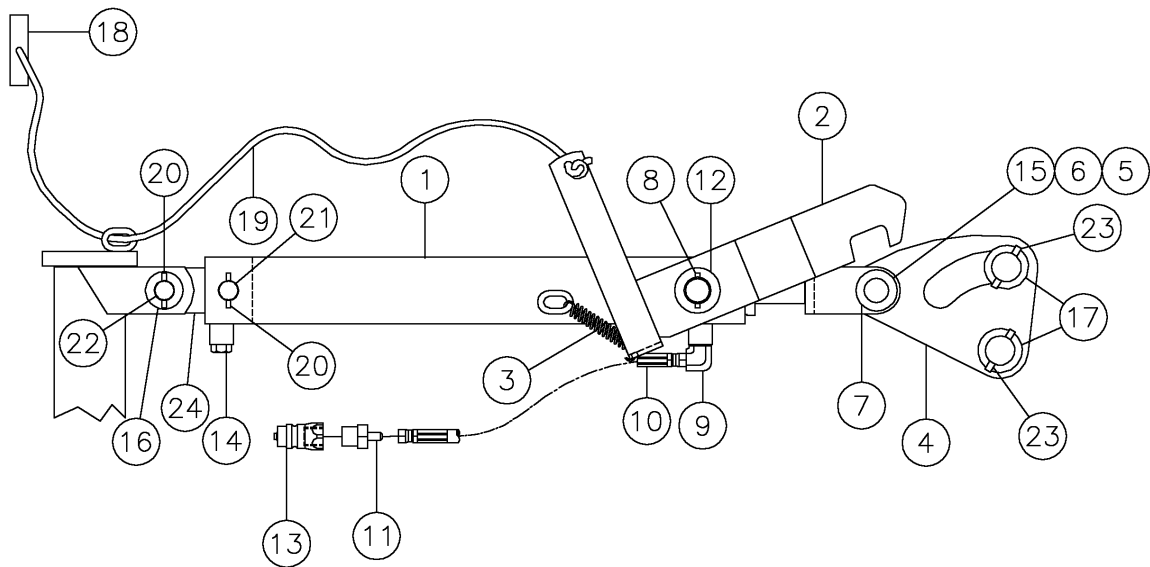
U-JOINT COMPONENTS

Figure 3-5

REF. NO.	PART NO.	DESCRIPTION	QTY.				SERIAL NO.				REMARKS	
			5030	6030	7030	8030	5030	6030	7030	8030		
3-5	1	94887-001	FEMALE PROTECT TUBE	1	1	1	1					
3-5	2	94888-001	MALE PROTECT TUBE	1	1	1	1					
3-5	3	94889-001	YOKE	1	1	1	1					
3-5	4	94890-001	SLIDE BOLT	1	1	1	1					
3-5	5	127192-001	O R CLUTCH F5/1R-2400 1 3/8 X 6	1	1	1	1					
3-5	6	94892-001	JOURNAL ASSY CPL	2	2	2	2					
3-5	7	94873-001	GREASE NIPPLE	2	2	2	2					
3-5	8	94893-001	YOKE	1	1	1	1					
3-5	9	94894-001	EXPANSION PIN	2	2	2	2					
3-5	10	94895-001	INNER PROFILE SHAFT	1	1	1	1					
3-5	11	94896-001	OUTER PROFILE SHAFT	1	1	1	1					
3-5	12	94897-001	YOKE	1	1	1	1					
3-5	13	94898-001	PROTECTION CONE	2	2	2	2					
3-5	14	94875-001	SCREW	2	2	2	2					
3-5	15	94876-001	REINFORCEMENT COLLAR	2	2	2	2					
3-5	16	94877-001	BEARING RING	2	2	2	2					
3-5	17	94885-001	SAFETY CHAIN	2	2	2	2					
3-5	18	2326-902	DECAL-PTO ROTATING DRIVE LINE	1	1	1	1					
3-5	19	70000-108	DECAL-DANGER 3 1/2 X 9	1	1	1	1					
		94886-001	SHAFT-PTO (INC. REF. 1-19)									

HYDRAULIC CYLINDER ASSEMBLY-2 1/2" X 19"

Figure 4-1



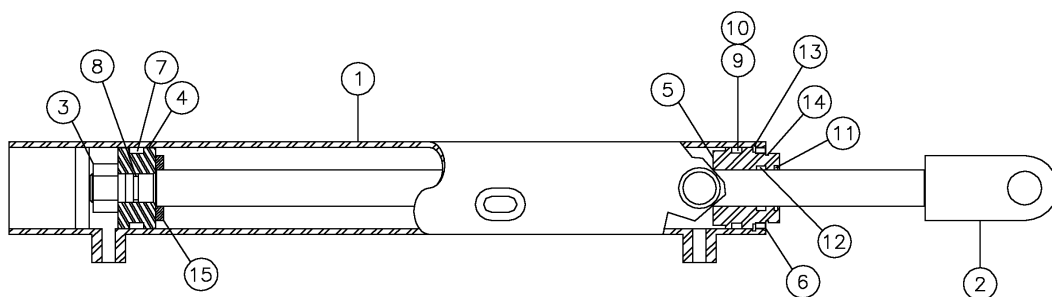
HYDRAULIC CYLINDER ASSEMBLY-2 1/2" X 19"

Figure 4-1

REF. NO.	PART NO.	DESCRIPTION	QTY.				SERIAL NO.				REMARKS	
			5030	6030	7030	8030	5030	6030	7030	8030		
4-1	1	507023-001	CYLINDER-2 1/2 X 19 (BRKDNW FIG. 4-2)	1	1	1	1					
4-1	2	110764-001	LATCH-CYLINDER ASSY	1	1	1	1					
4-1	3	1789-049	SPRING-EXT. 7/16OD X 3/8ID-1 1/2	1	1	1	1					
4-1	4	98084-001	PLATE-PIVOT	1	1	1	1					
		510504-872	PLATE-PIVOT									1
		510503-796	PLATE-PIVOT									1
4-1	5	483-005	WASHER-1 1/2 X 1 X 14GA.MB	A/R	A/R	A/R	A/R					
4-1	6	1978-015	ROLL PIN-1/4 X 2 HEAVY DUTY	1	1	1	1					
4-1	7	110587-001	PIN-CYLINDER	1	1	1	1					
4-1	8	1978-025	PIN-ROLL 3/16 X 1 1/2	1	1	1	1					
4-1	9	98089-001	FITTING-1/2M X 4M JIC90W/ORIFICE	1	1	1	1					
4-1	10	53843-163	HOSE-1/4 X 94 4FS JIC (100R1)	1	1	1	1					
4-1	11	53657-001	FITTING-8M OR 4M JIC ST	1	1	1	1					
4-1	12	483-045	WASHER-2 1/4OD X 1 1/32ID-.038 MB	A/R	A/R	A/R	A/R					
4-1	13	500085-001	HYD. COUPLER-POPPET STYLE	1	1	1	1					
4-1	14	98090-001	PLUG-1/2" BREATHER	1	1	1	1					
4-1	15	483-003	WASHER-1 1/2 X 1 X 10GA.MB	2	2	2	2					
4-1	16	485-017	WASHER-3/4 FLAT	1	1	1	1					
4-1	17	483-007	WASHER-1 7/8 X 1 1/4 X 14 GA.MB	4	4	4	4					
4-1	18	507717-001	HANDLE	1	1	1	1					
4-1	19	1801-001	NYLON CORD	1	1	1	1					
4-1	20	508255-040	PIN-ROLL 6MM X 40MM	3	3	3	3					
4-1	21	508254-001	PIN	2	2	2	2					
4-1	22	94740-001	HINGE PIN	1	1	1	1					
4-1	23	94615-001	EXPANSION PIN	2	2	2	2					
4-1	24	500575-001	PIN	1	1	1	1					

HYDRAULIC CYLINDER COMPONENTS 2 1/2" X 19"

Figure 4-2



HYDRAULIC CYLINDER COMPONENTS 2 1/2" X 19"

Figure 4-2

REF. NO.	PART NO.	DESCRIPTION	QTY.				SERIAL NO.			REMARKS	
			5030	6030	7030	8030	5030	6030	7030		8030
4-2	1	507024-001	BODY ASSY-CYLINDER 2 1/2" X 19"	1	1	1	1				
4-2	2	507029-001	CYLINDER CLEVIS	1	1	1	1				
4-2	3	330-011	NUT-7/8-14 NF SLTL UTC	1	1	1	1				
4-2	4	24732-001	PISTON-CYLINDER	1	1	1	1				
4-2	5	111368-001	GLAND-CYLINDER	1	1	1	1				
4-2	6	119211-001	BACKUP RING-2.485/2.480 OD	1	1	1	1				
4-2	7	19510-001	UNI-RING	1	1	1	1				
4-2	8	208-007	O-RING SPRING CAP	1	1	1	1				
4-2	9	19513-001	WASHER-BACK UP	1	1	1	1				
4-2	10	19514-001	O-RING	1	1	1	1				
4-2	11	19512-001	WIPER	1	1	1	1				
4-2	12	19511-001	ROD-SEAL	1	1	1	1				
4-2	13	107001-001	SNAP RING-2 1/2 INT. SPIRAL	1	1	1	1				
4-2	14	107002-001	SNAP RING-2 1/8 EXTERNAL	1	1	1	1				
4-2	15	509232-001	WASHER-SPACER	1	1	1	1	101-181	101-221		
		507023-001	CYLINDER-2 1/2 X 19 HYDRAULIC (INC. REF. 1-14)								
		111377-001	SEAL KIT (INC. REF. 7-14)								

REVISION HISTORY

REVISION	DATE	PAGE(S)	DESCRIPTION
1.01	APRIL 1999	ALL	1st EDITION MANUAL RELEASED
1.02	JANUARY 2000	ALL	ALL FIGURES REPLACED
1.03	JANUARY 2001	ALL	ADDED 8030 MOWER
1.04	NOVEMBER 2002	ALL	ADDED 5030 MOWER
1.05	JANUARY 2003	PAGE 2-4	DESCRIPTION / TEXT CHANGE
1.06	OCTOBER 2003	PAGE 2-11, 2-12	NEW PAGES
1.07	FEBRUARY 2004	FIGURES 2-2,3-1,3-2,4-1	DESCRIPTION / TEXT CHANGE

